

**Subject: Asian Citrus Psyllid - Citrus Leaf Sample Collection and Handling**

For years now, growers have used leaf analyses, as developed by Universities, to develop nutritional programs. Citrus leaf samples have been collected and analyzed for many years without concern of introduced damaging pests. However that has changed due to the introduction of the Asian Citrus Psyllid. This pest has the potential for causing far reaching detrimental effects to the California Citrus industry. Fruit Growers Laboratory has reviewed operations and developed new protocols for handling and processing of citrus leaf samples. These protocols provide safeguards and protections that minimize potential for movement of the psyllid from one area to another. Our concern is that that movement, even within regulated areas, could result in growers having to spray their orchards. Currently, new ACP insect finds result in growers having to spray their orchards in the vicinity of the find.

If your orchard is within the Southern California contiguous regulated area, special collection, handling and delivery is not necessary. You can collect and send samples in the usual manner and deliver to Fruit Growers Laboratory in Santa Paula at 801 Corporation Street, Santa Paula, CA 93060 (which is also in the same contiguous regulated area).

If you are collecting samples from a non-contiguous regulated area such as Tulare County please send or deliver your samples to our Visalia Office at 9415 Goshen Avenue, Visalia, CA 93291. Samples collected from the Central Coast areas of Arroyo Grande or San Luis Obispo should be delivered to our San Luis Obispo facility at 3442 Empressa Drive, Suite D, San Luis Obispo, CA. FGL will be processing samples at these locations because they are located within the quarantined or regulated areas. Please call the laboratory in Santa Paula at (805) 392-2000 for sampling and handling of samples from other non-contiguous areas (see overall map for the locations of other non-contiguous locations).

We appreciate your cooperation in this regard. If you would like us to collect or pickup samples call the appropriate laboratory in your area. If you have any questions or require any additional information please give me a call (805) 392-2051.

Sincerely,

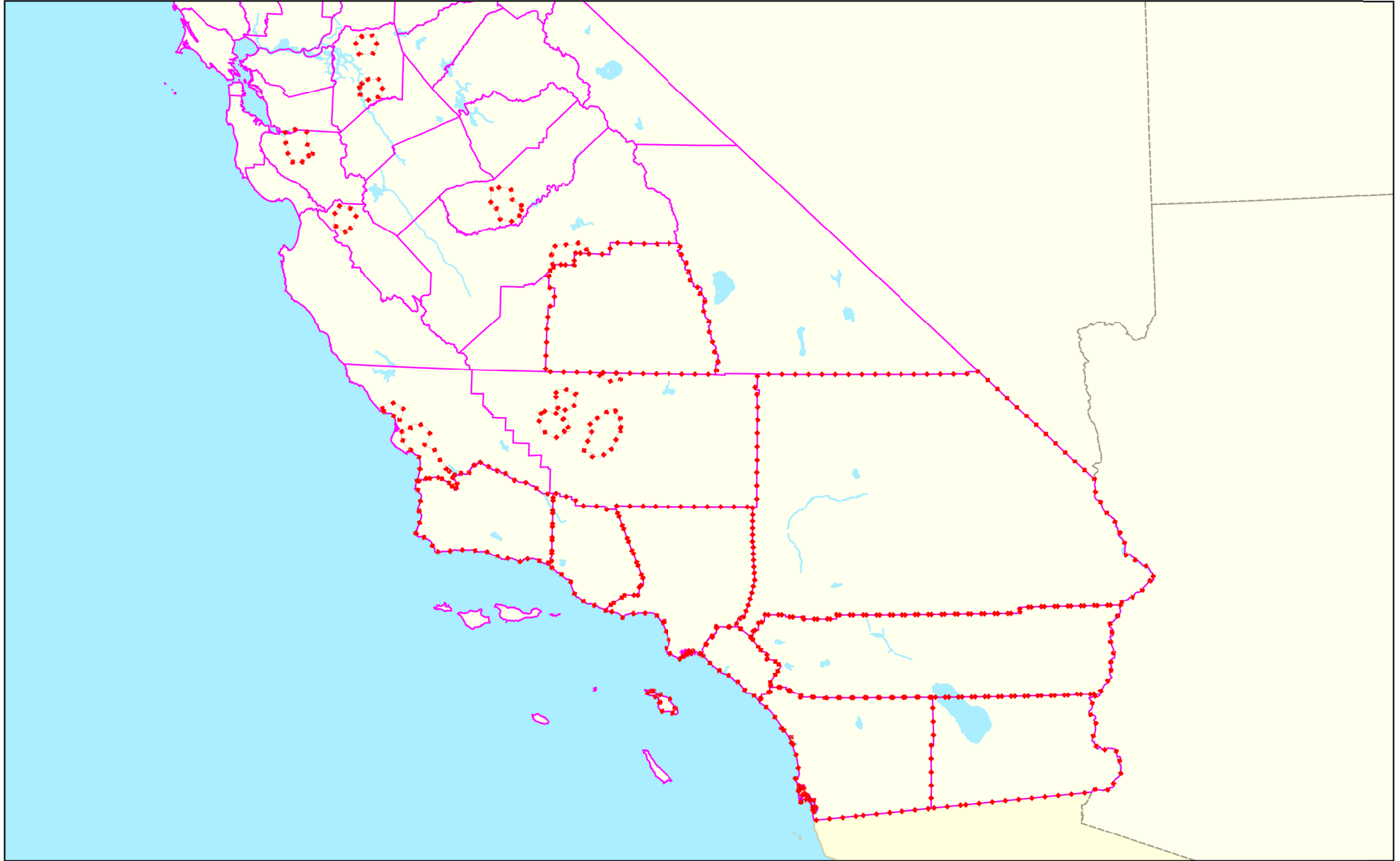
**FRUIT GROWERS LABORATORY, INC.**

*Scott Bucy*

Scott Bucy, Director of Ag. Services



# 2015 Asian Citrus Psyllid Overview



Quarantine Boundary  
Approved: 08/27/2015  
52,038 sq miles

Map Printed 09/01/2015  
MapInfo 12.5 StreetPro v 2014.09



CALIFORNIA DEPARTMENT OF  
FOOD & AGRICULTURE